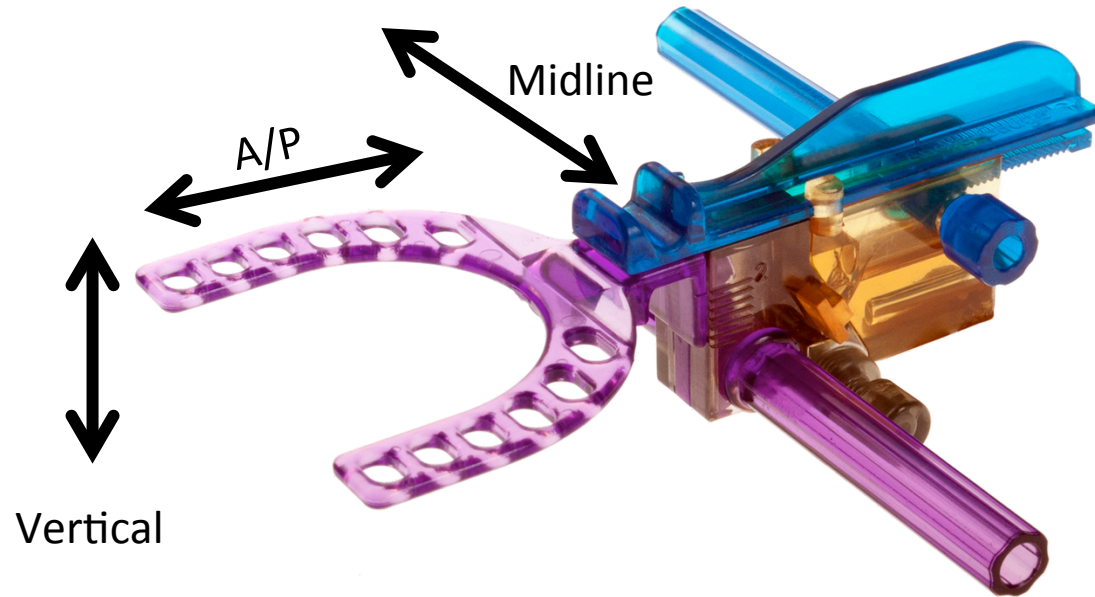


Andra Gauge™

Obtain the Best Bit Registration

Capture All Three Dimensions



Sagittal/Side-to-Side



Anterior/Posterior



Vertical

Easy to Use

- Allows the Dentist to reduce chair time and increase communication with the Dental Lab for any oral appliance from Splints to Sleep Oral Appliances.
- 5 Easy Steps to create a 3D bite impression to send to the Lab



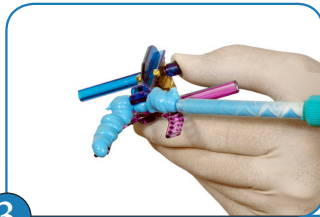
1

Align the patients midline to ensure a comfortable fit that will reduce TMJ effects from long term use of appliance.



2

Dial in desired Anterior/Posterior, Vertical and Sagittal position. Remove the Andra Gauge and lock positions in place.



3

Once the Andra Gauge is locked into the correct position apply bite registration material.



4

Have patient bite into the location that you set.



5

Remove the Andra Gauge and now you have a perfect 3D bite to send to the lab. This avoids any confusion and allows for a quicker turn around with the most accurate bite.

Ideal for Sleep OA Impressions

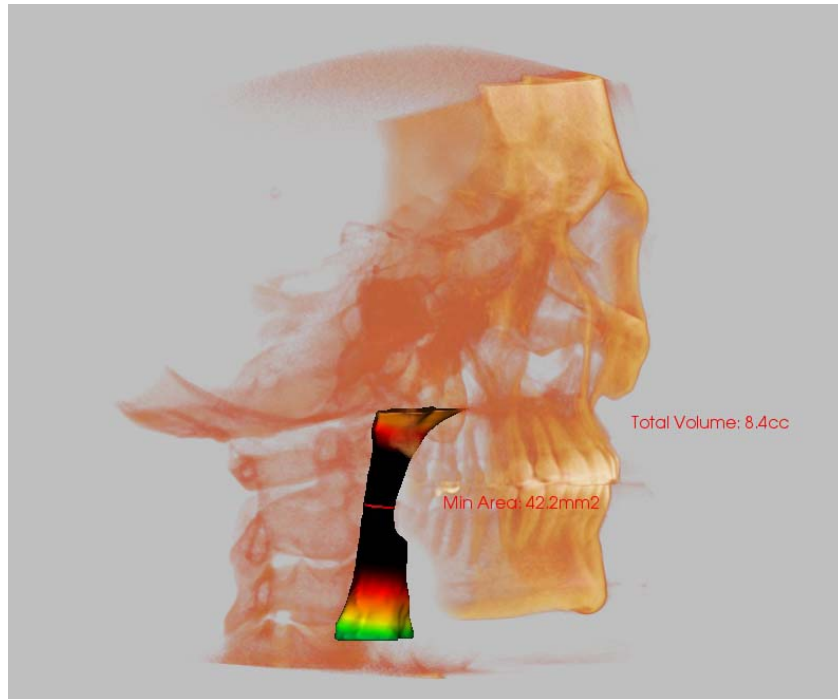
- Finding the optimal position for an Oral Appliance can be time consuming and difficult.
- Kosmo Technologies has done a pilot study utilizing an approach called the “Step Back Technique”
- This Technique takes only a few minutes to find the Optimal Position for an Oral Appliance to treat OSA
 - On average an increase of patient Airway was over 62%
 - All patients showed improvement in the Study
 - All patents mandibles were set to a very comfortable position with a reduced A/P position then average and an increased vertical position

Description Of Initial Study

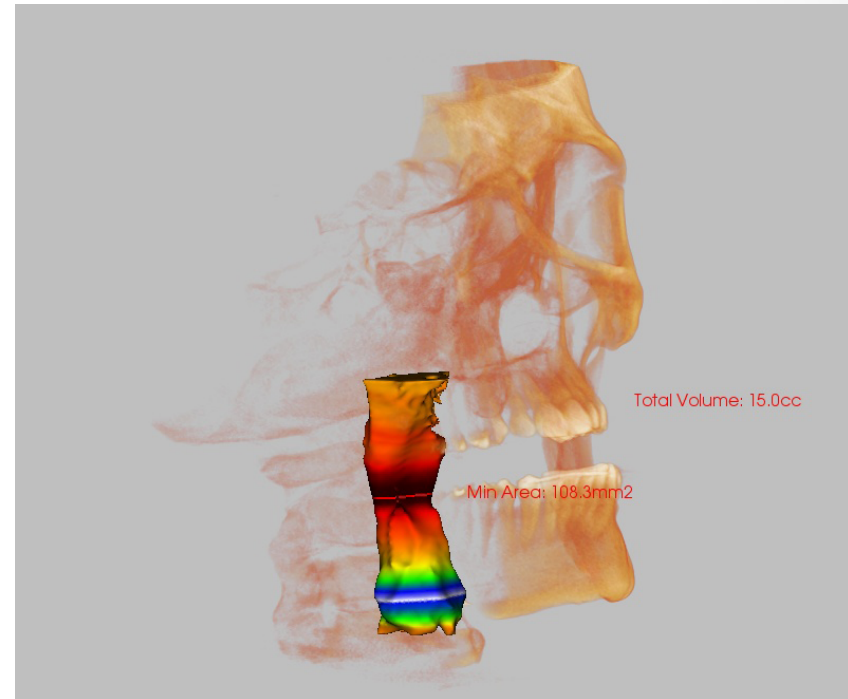
- Quantitative Case Study
 - 10 random patients were selected from a patient pool diagnosed with Sleep Apnea .
 - 30% Currently use CPAP and wish to use a different treatment.
 - All patents are motivated in improving their ability to sleep.
- Test Method
 - Patients are placed in a dental chair and angled to a supine position.
 - The Andra Gauge is placed into the patients mouth.
 - The patient is asked to make a snoring sound.
 - The patient is then asked to protrude their jaw as far as comfortable while still trying to make the snoring sound.
 - The dentist then steps the protrusion back and increases the vertical until the patient can no longer snore and or the practitioner can audibly tell that the airway is open.
 - Once position is determined, patient then had two Cone Beam scans one in habitual position and the other with the Andra Gauge position.

Result Example

Patient in Habitual Position



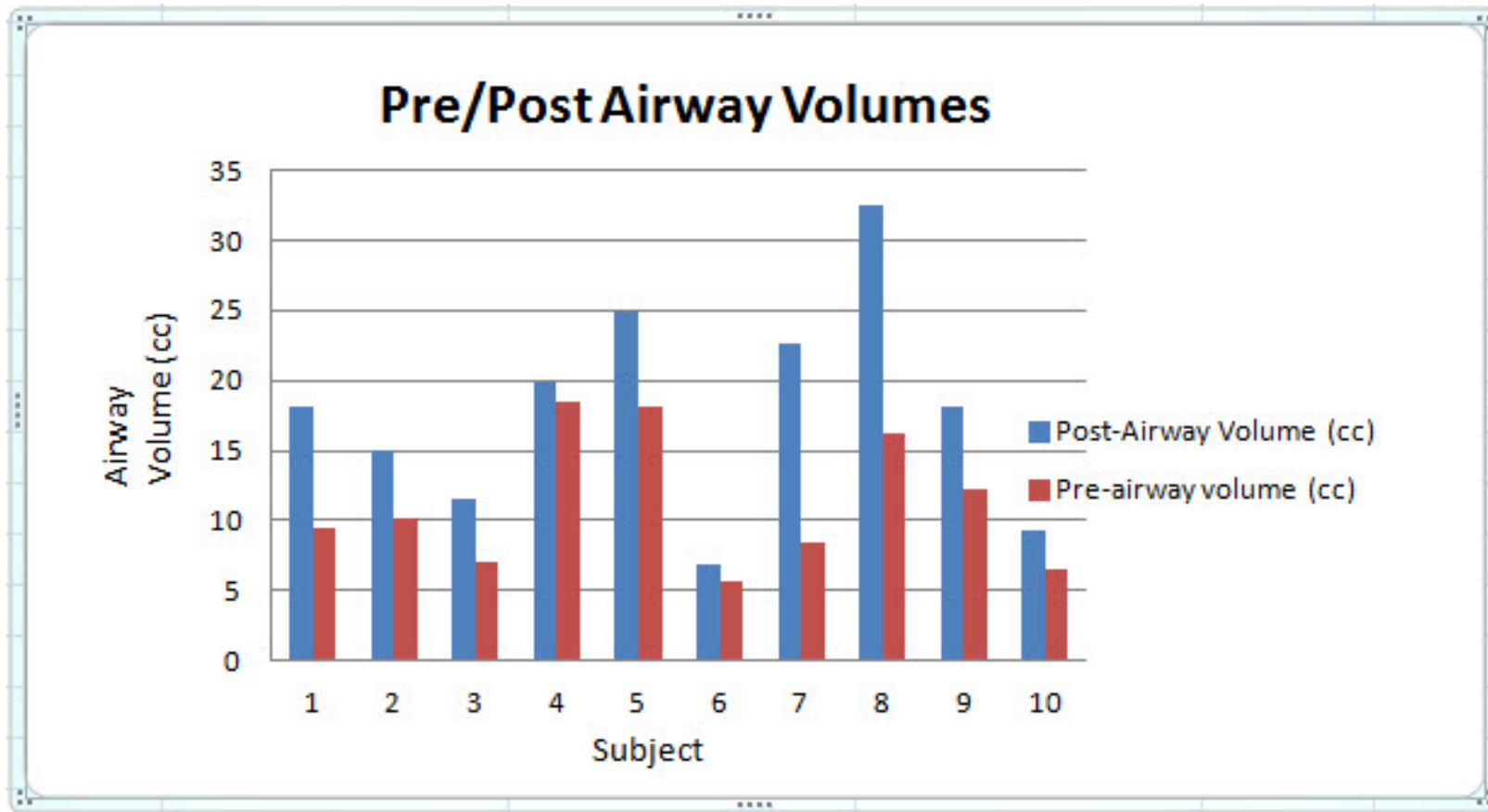
Patient with Andra Gauge



By utilizing a Cone Beam we were able to quickly and reliably determine the increase in the airway opening. Patient's chin is positioned on a platform for both scans.

Pre and Post Airway Results

- Significant Increase in Airway on all Patients
- All patients TMJ were left in a comfortable state and the A/P and Vertical positions fit well within Current OA's



Obtain the Optimal Position

- Quickly helps obtain the optimal position for oral appliances
 - Reduction in chair time
- Increases a dentist's ability to treat more patients
- Technique simplifies OA fitting for your patients while offering an alternative to CPAP.

When **Millimeters Matter**

The Andra Gauge is the
only Choice



To find out more please go to www.AndraGauge.com